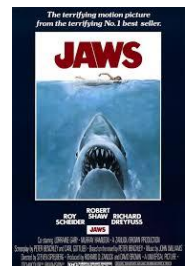


ICT Can I make a bar chart using Microsoft Excel
Results from a survey about all-time favourite films.



The Titanic	75
Bugsy Malone	25
Grease	53
Mulan	21
Frozen	743
Wonder Woman	262
The Lord of The Rings	504
Jaws	673
The Terminator	105
Indiana Jones And the Last Crusade	165
Back to The Future	258
Star Wars	850



1. Open - Microsoft Excel and enter the names of the films in each row starting at **A1** and going down
2. Next to each film name enter the number of people that said it was their favourite film, starting at **B1** and going down

	A	B
1	The Titanic	75
2	Bugsy Malone	25

3. When you entered all the names of the films and the number of people that chose the film, highlight both rows by using your mouse.
4. Then go to **Insert** on your tool bar, select **Charts** and then choose **2-D Columns**.
5. Then Double click each bar to select it go to **Format** on the tool bar and go to **Shape Fill**.
6. Choose a different colour or shade for each film and a key should automatically appear.
7. Explore different types of chart (2-D and 3D)
8. Save your completed spreadsheet.